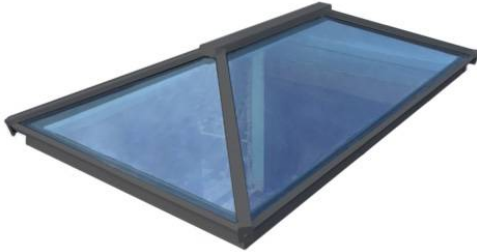


Slimline Roof Lantern

Weights & Heights Information

RLD-003 Rev 1.2 (010519)



FOUR-PANE

<u>Stock Size</u>	<u>Weight</u>	<u>Height</u>
1500 x 1000mm	70kg	341mm
2000 x 1000mm	86kg	341mm
2000 x 1500mm	110kg	457mm
2500 x 1500mm	132kg	457mm
3000 x 1500mm	155kg	457mm



MULTI-PANE

<u>Stock Size</u>	<u>Weight</u>	<u>Height</u>
2000 x 1000mm	90kg	341mm
2500 x 1500mm	145kg	457mm
3000 x 2000mm	210kg	574mm
4000 x 2000mm	270kg	574mm

Please note:

This information is to be used as a guide only. These calculations are approximate based on a typical example and specification (which may vary slightly) and are not to be used as definitive. Please ensure that your structural calculations use these figures as minimum weights or heights and ensure there is sufficient support built into the roofs design to cater for the proposed weight of the roof lantern(s) purchased.